

# The European Commission's science and knowledge service

Joint Research Centre



# **JRC and the Pilot Project** ***Science meets Parliaments /*** ***Science meets Regions***

**Valeria Liverini**

*Inter-institutional, International Relations & Outreach*  
Košice, 3 October 2019

# JRC's Mission

***“ As the science and knowledge service of the Commission our mission is to support EU policies with independent evidence throughout the whole policy cycle ”***



# JRC sites

Headquarters in Brussels and research facilities located in 5 European countries:

- Belgium (Geel)
- Germany (Karlsruhe)
- Italy (Ispra)
- The Netherlands (Petten)
- Spain (Seville)



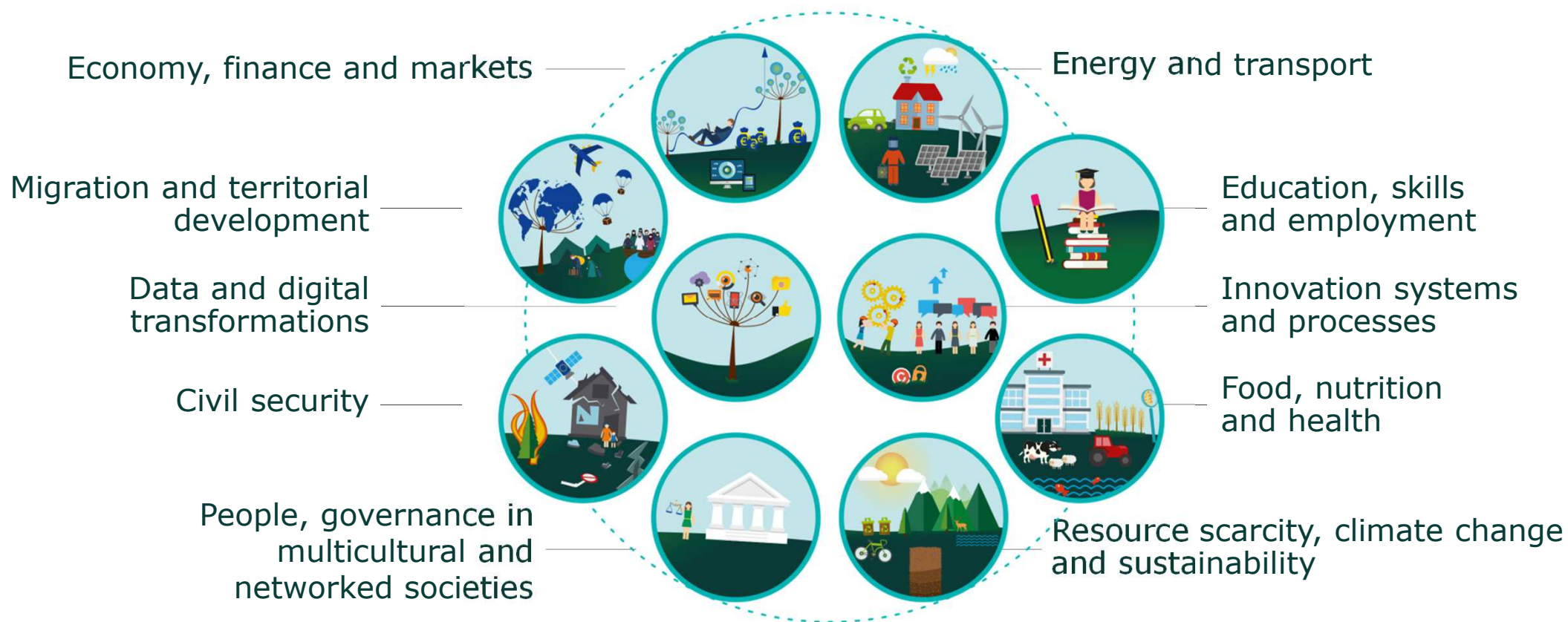


# JRC facilities



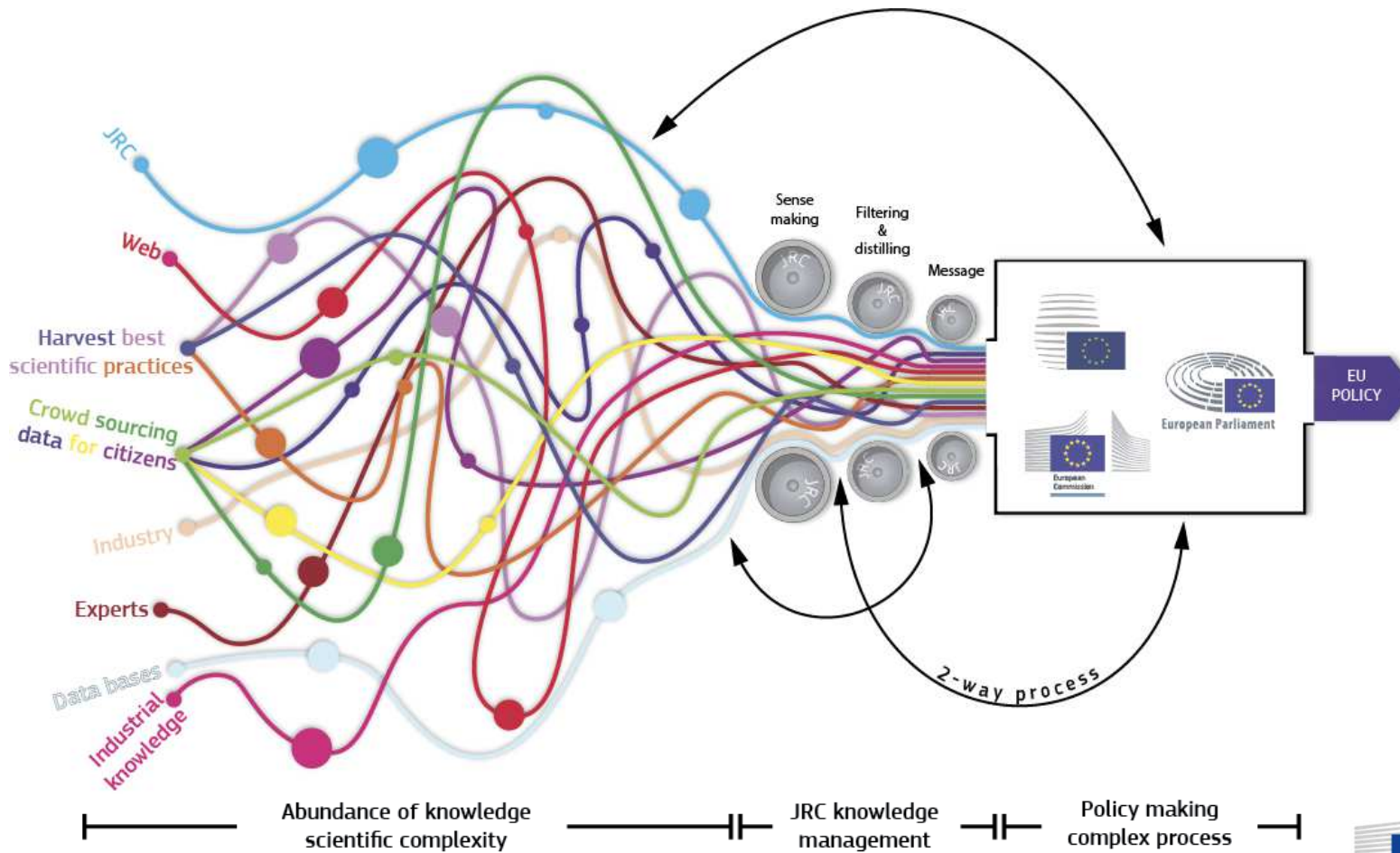
JRC hosts 41 physical research infrastructures with a potential of opening to external users (out of 69)

# JRC 10 Priority Nexus





# Dealing with the information overload



# Knowledge Centres

**Disaster Risk Management Knowledge Centre**

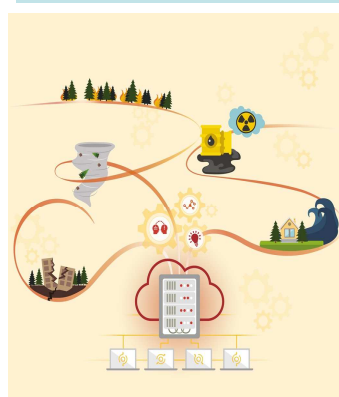
**Knowledge Centre on Migration and Demography**

**Knowledge Centre for Territorial Policies**

**Knowledge Centre on Bioeconomy**

**Knowledge Centre for Food Fraud and Quality**

**Knowledge Centre for Global Food and Nutrition Security**





# Competence Centres

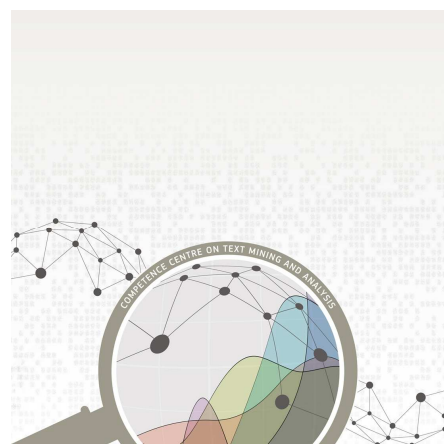
**Competence  
Centre on  
Composite  
Indicators and  
Scoreboards**



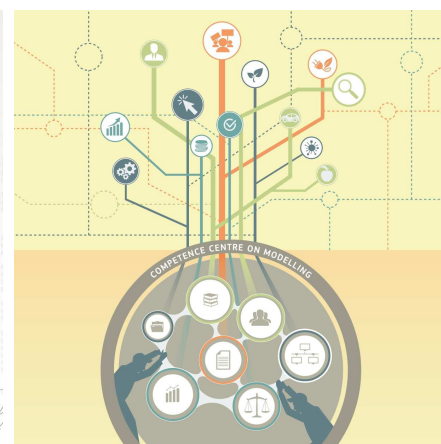
**Competence  
Centre on  
Microeconomic  
Evaluation**



**Competence  
Centre on  
Text Mining  
and Analysis**



**Competence  
Centre on  
Modelling**



**Competence  
Centre on  
Foresight**



# JRC's support to Member States and Regions

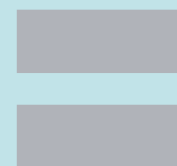
## Why Regions should engage with us

We provide you with the factual information to support you in taking the best policy decisions



## Why JRC should engage with regions

- a) Cooperating with national, regional and local authorities allows us to pursue scientific excellence further
- b) 70% of JRC work is focused on implementation of EU policies



Greater benefit for citizens and society

# Want to know how your city compares to others in the European context? Try the Urban Data Platform

INDICATOR DESCRIPTIONS AND DEFINITION OF URBAN REPORTING UNITS

INDICATORS DESCRIPTION | DEFINITION OF URBAN REPORTING UNITS

RESOURCE EFFICIENCY

Share of green infrastructure (percentage, %)

Description: Green Infrastructure (GI) is defined as a network of high quality green spaces and other environmental features. GI includes natural and semi-natural areas, features and green spaces in rural and urban, terrestrial, freshwater, coastal and marine areas. This indicator is expressed as the share of GI relative to other land-uses.

Unit of measurement: Percentage (%)

Source: LUISA Territorial Modelling Platform

Further information available at: <http://publications.jrc.ec.europa.eu/repository/handle/JRC100001>

Relevant sections at the Cities' Topic Page of the European Commission: Sustainable use of land and nature-based solutions in cities

Green infrastructure per capita (m2/person)

Access to green urban areas (hectares)

## Metadata

## Download

DOWNLOAD MAP  
NOx emissions (100 kg/year)

CHARTS + MAP | ONLY CHARTS | ONLY MAP

PNG | PDF

SHARE MAP  
NOx emissions (100 kg/year)

f | | | |

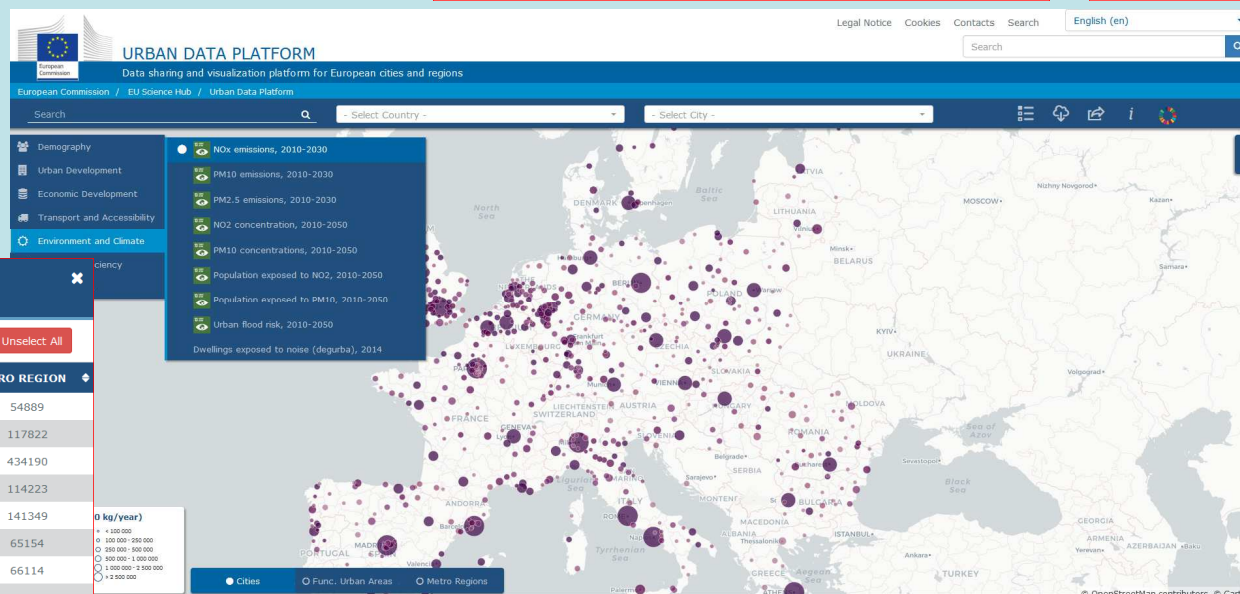
## Share

## Compare

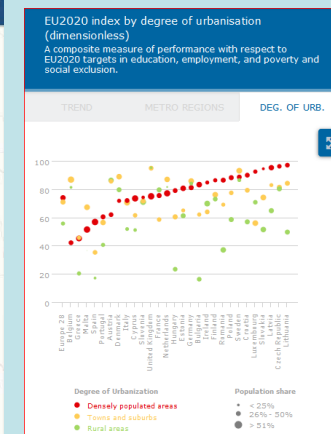
COMPARING CITIES  
NOx emissions (100 kg/year)

Search  Show Selected  Show Capitals  Unselect All

NAME	CITY	FUNC. URBAN AREA	METRO REGION	
<input type="checkbox"/>	's-Gravenhage	26034	56136	54889
<input type="checkbox"/>	's-Hertogenbosch	16642	35484	117822
<input type="checkbox"/>	A Coruña	54874	156570	434190
<input type="checkbox"/>	Aachen	16807	114323	114223
<input type="checkbox"/>	Aalborg	55923	142022	141349
<input type="checkbox"/>	Aberdeen	22371	65447	65154
<input type="checkbox"/>	Acireale	2562	2580	66114
<input type="checkbox"/>	Aix-en-Provence	72108	179285	258243
<input type="checkbox"/>	Alcalá de Henares	21703	680955	694357
<input checked="" type="checkbox"/>	Alcobendas	13324	680955	694357



To know more: <http://bit.ly/2nGpt46>



## Charts

# Want to know how to best tackle air pollution?

The Urban PM<sub>2.5</sub> Atlas, has been produced by the JRC to help local and regional policy-makers answer key questions related to air quality planning



To know more: <http://bit.ly/2A8cFI8>



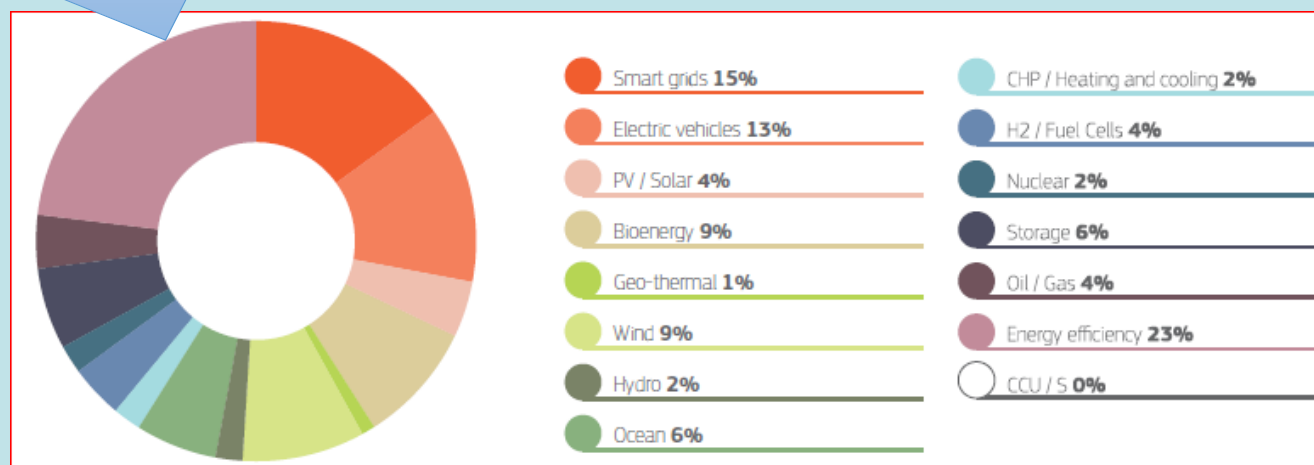
# Want to achieve better energy efficiency?

## Smart Specialisation Platform on Energy (S3P-Energy)



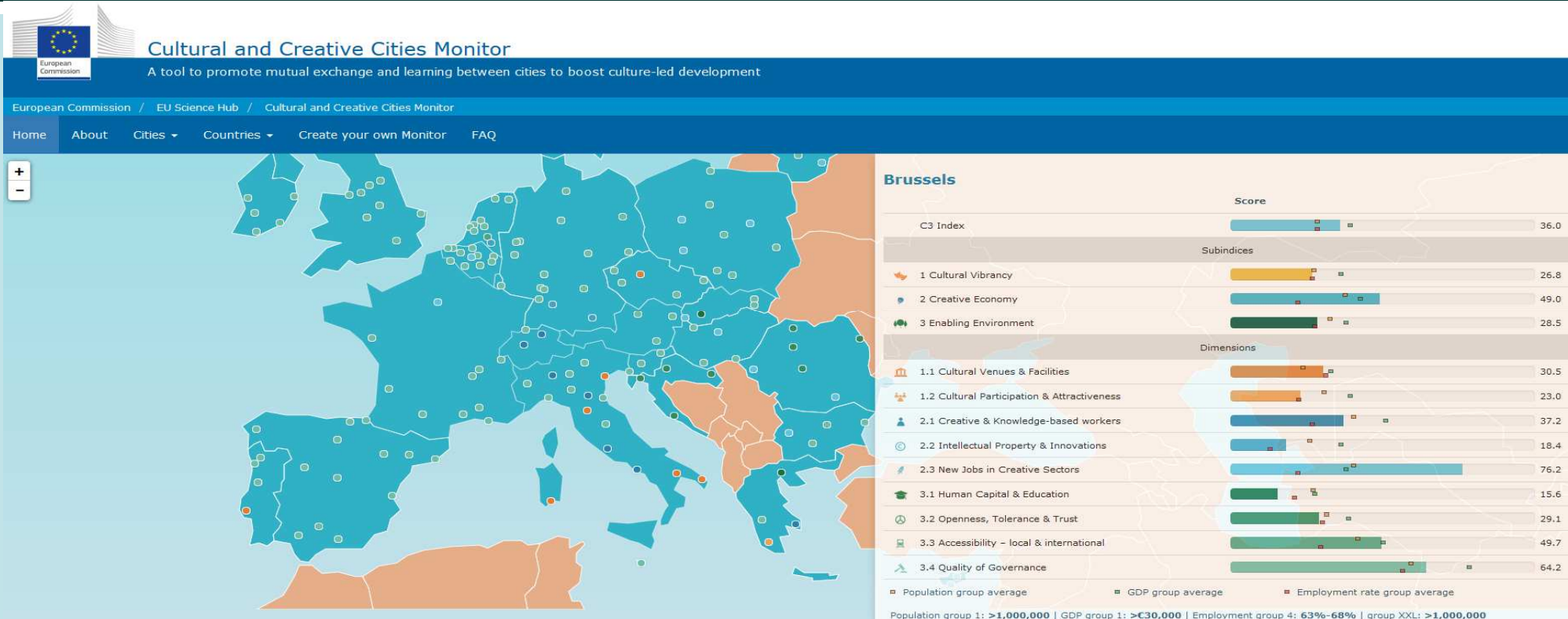
## Heating & Cooling

Energy efficiency is the key priority of regions and countries in the Smart Specialisation Platform in the area of energy



To know more: <http://bit.ly/1duDESF>

# Want to know how rich your city is in culture and creativity? Use the Cultural and Creative Cities Monitor



To know more: <http://bit.ly/2uNAr9l>

# The Handbooks



Online version:

<http://bit.ly/2Ep8uwM>



Online version:

<http://bit.ly/2mjb3NZ>

# Science meets Parliaments/Regions

Science  
Meets  
Parliaments

#EUsci4Parl



Science  
Meets  
Regions

#EUsci4Regio



- EP entrusted JRC with **pilot project** extending the initiative across the EU
- Launched during the **annual "Science meets Parliaments" in the European Parliament in Brussels on 6-7 February 2019.**
- 18 of 26 events have taken place – **evaluation and reflections on future instrument** have started



# Science meets Parliaments/Regions

- **Beneficiaries:** national, regional and local authorities
- **Objective:** to bring together:
  - Scientists
  - Policymakers
  - Private sector, stakeholders and citizensto address locally relevant challenges with the help of scientific evidence, encourage mutual understanding & bring science closer to citizens
- **Topics:** Jobs & Growth, Sustainable Development, Energy & Climate Change, Food Safety & Authenticity, Migration & Demography

# Science meets Parliaments/Regions

3 actions :

- Organisation of 'Science meets Parliaments /Science meets Regions' **events** and **innovation camps**
- **Studies** to provide data and scientific evidence to support the events– either in advance or as follow-up
- Develop a **training package** for scientists and policy-makers

# Science meets Parliaments/Regions

## 26 events in 22 MS

**Slovakia: Sustainable energy and climate change**

Croatia: Social policy/jobs & growth

Czech Republic: Eco-innovation/energy policy

Finland: Coastal and maritime  
tourism/sustainable growth

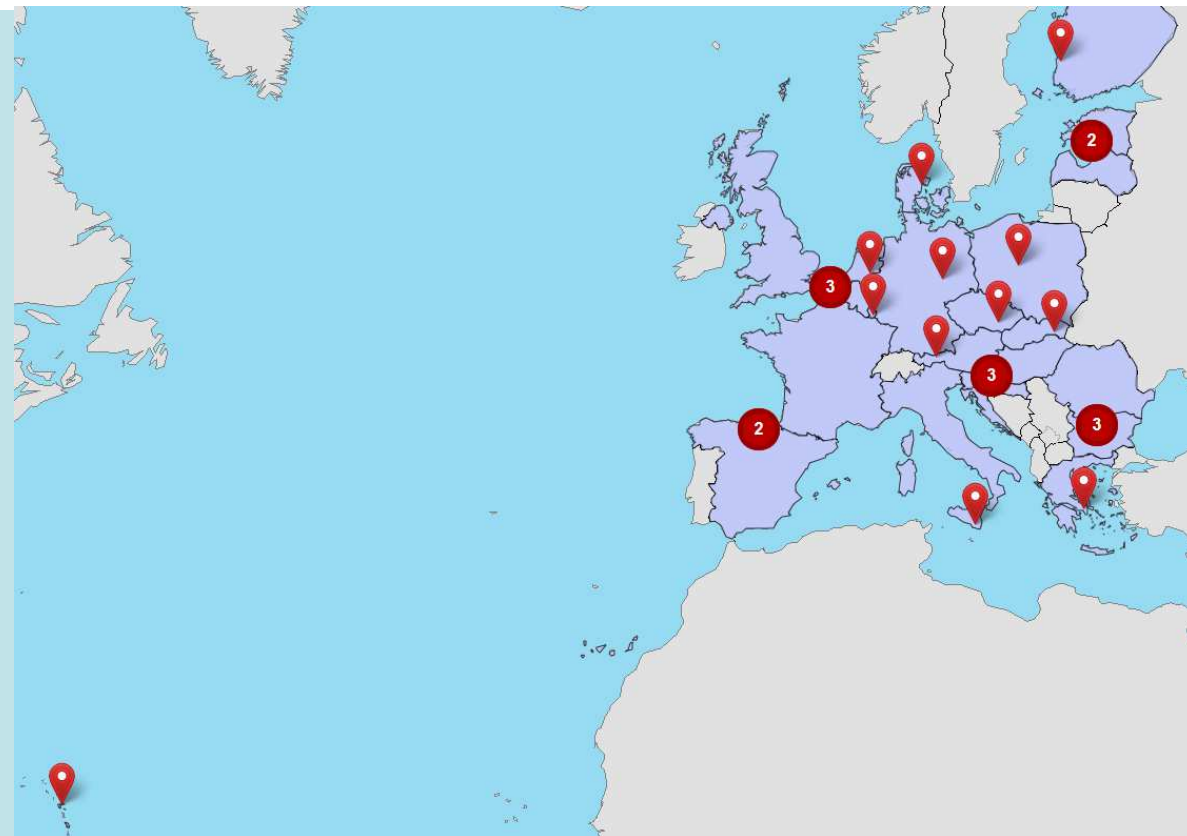
Greece: Migration

Latvia: Migration and demography/depopulation

Poland: Energy/climate change/sustainable  
development

Spain: Sustainable development/jobs and  
growth/environmental preservation

...



# Thanks

